

Product Specification

1 . Model

Silicone Light FL10 - 96C1* - ** (* : ALPHABET, ** : NUMBER)

2 . Coverge

This product specification explains regulations for FL10 D(Defuse) - type

3 . Structure and Dimension

- (1) Light Source : LED
- (2) Color : Red/Orange/Green/Blue/White
- (3) Number of Bulb : 96pcs Standard product
- (4) Cylinder diameter : 7
- (5) Length : 965mm Standard product
- (6) LED Pitch : 10mm
- (7) Height : 13mm
- (8) Weight : 68 g
- (9) Lead Wire : Lead wires have been attached on both sides.

4 . Electric Property

- (1) Supply Voltage : DC12V
- (2) Power Consumption : approximately 6W (Maximum)

5 . Operating Conditions

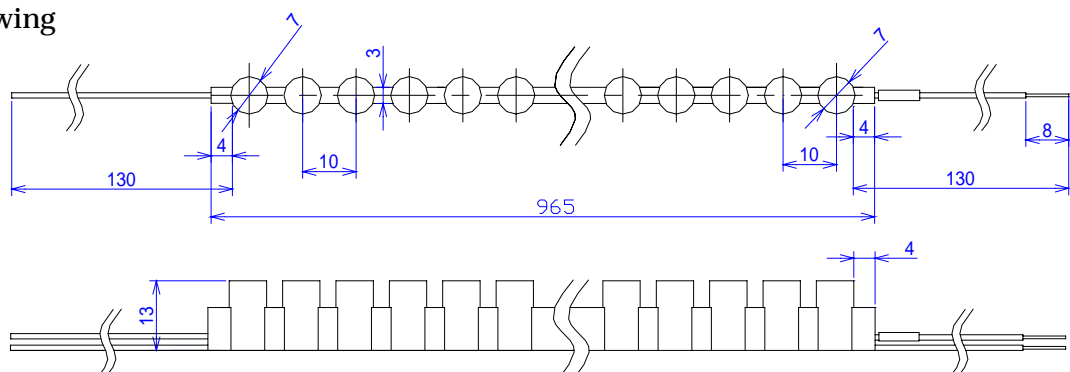
- (1) Surrounding Temperature : - 10 ~ +40
- (2) Usage Environment : Indoors/Outdoors,drip-proof
- (3) Maximum Bending Angle : Horizontal 45 ° Vertical 10 °

6 . Warning

- (1) Please handle the product according to our " Silicone Light Installation Warning".
- (2) The products are waterproof, but in case of underwater, the light must be protectd beforehand. Complies with IP67 standard.
- (3) For FL10 D - type Green,Blue and White
It is possible to cut 3LED bulbs each.
(Example)Cutting between the 3rd and 4th bulbs, between the the 6th and 7th bulbs...
- (4) For FL10 D - type Red and Orange
It is possible to cut 4LED bulbs each.
(Example)Cutting between the 4rd and 5th bulbs, between the the 8th and 9th bulbs...

IP67...Waterproofness standard indicating the capacity to remain submerged at a depth of one meter for 30 minutes without damage.

7 . Drawing



Please note that content described above may be changed without an advance notice.