

Product Specification

1 . Model

Silicone Light FL10 - 96T1* - ** (* : ALPHABET, ** : NUMBER)

2 . Coverge

This product specification explains regulations for FL10 I(Intensive) - type

3 . Structure and Dimension

- (1) Light Source : LED
- (2) Color : Red/Orange/Green/Blue/White
- (3) Nimber of Bulb : 96pcs Standard product
- (4) Cylinder diameter : 7
- (5) Length : 965mm Standard product
- (6) LED Pitch : 10mm
- (7) Height : 12mm
- (8) Weight : 56 g
- (9) Lead Wire : Lead wires have been attached on both sides.

4 . Electric Property

- (1) Supply Voltage : DC12V
- (2) Power Consumption : approximately 6W (Maximum)

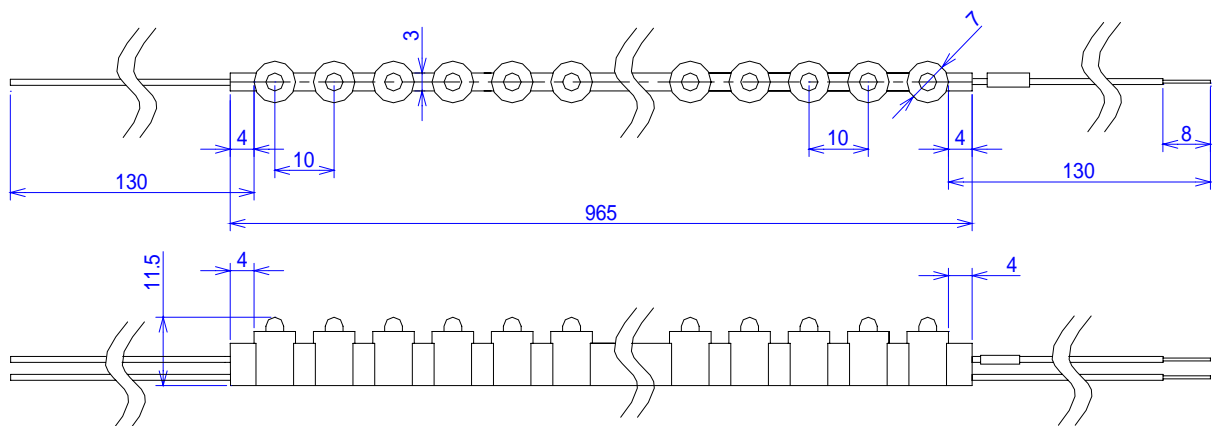
5 . Operating Conditions

- (1) Surrounding Temperature : - 10 ~ +40
- (2) Usage Environment : Indoors/Outdoors,drip-proof
- (3) Maximum Bending Angle : Horizontal 45 ° Vertical 10 °

6 . Warning

- (1) Please handle the product according to our " Silicone Light Installation Warning".
- (2) The products are drip-proof, but in case of underwater, the light must be protected beforehand.
- (3) For FL10 I - type Green,Blue and White
It is possible to cut 3LED bulbs each.
(Example)Cutting between the 3rd and 4th bulbs, between the the 6th and 7th bulbs...
- (4) For FL10 I - type Red and Orange
It is possible to cut 4LED bulbs each.
(Example)Cutting between the 4rd and 5th bulbs, between the the 8th and 9th bulbs...

7 . Drawing



Please note that content described above may be changed without an advance notice.

Product Specification

1 . Model

Silicone Light FL10 - 96T2* - ** / FL10 - 96T4* - ** (* : ALPHABET, ** : NUMBER)

2 . Coverge

This product specification explains regulations for FL10 I2(Intensive and Frosted) - type

3 . Structure and Dimension

- (1) Light Source : LED
- (2) Color : Incandescent/Frosted(Red/Orange/Green/Blue/White)
- (3) Number of Bulb : 96pcs Standard product
- (4) Cylinder diameter : 7
- (5) Length : 965mm Standard product
- (6) LED Pitch : 10mm
- (7) Height : 12mm
- (8) Weight : 57 g
- (9) Lead Wire : Lead wires have been attached on both sides.

4 . Electrical Properties

- (1) Supply Voltage : DC12V
- (2) Power Consumption : approximately 6W (Maximum)

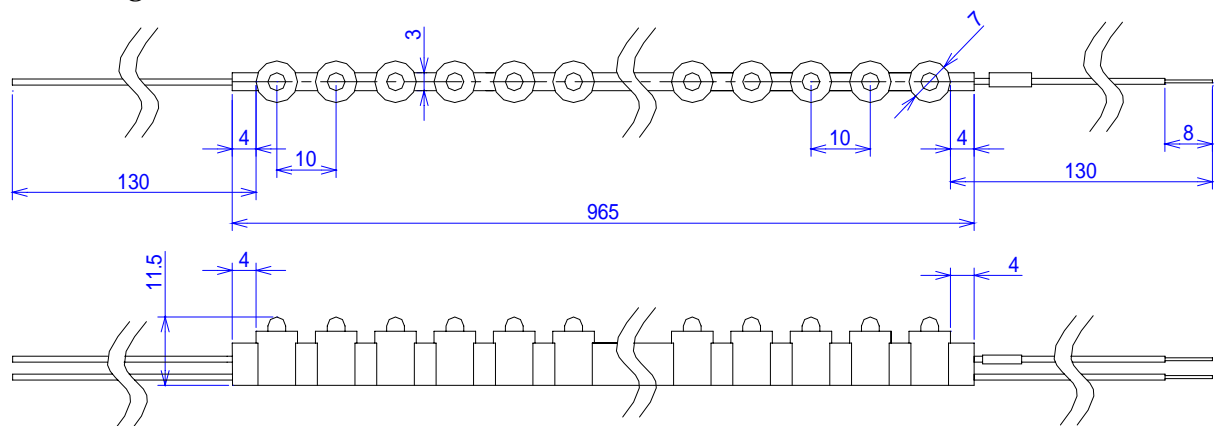
5 . Operating Conditions

- (1) Surrounding Temperature : - 10 ~ +40
- (2) Usage Environment : Indoors/Outdoors,drip-proof
- (3) Maximum Bending Angle : Horizontal 45 ° Vertical 10 °

6 . Warning

- (1) Please handle the product according to our " Silicone Light Installation Warning".
- (2) The products are drip-proof, but in case of underwater, the light must be protected beforehand.
- (3) For FL10 I - type Incandescent /Frosted(Green,Blue and White)
It is possible to cut 3LED bulbs each.
(Example)Cutting between the 3rd and 4th bulbs, between the the 6th and 7th bulbs...
- (4) For FL10 I - type Frosted(Red and Orange)
It is possible to cut 4LED bulbs each.
(Example)Cutting between the 4rd and 5th bulbs, between the the 8th and 9th bulbs...

7 . Drawing



Please note that content described above may be changed without an advance notice.