

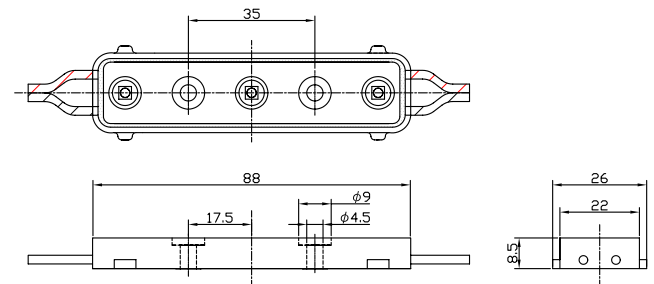
**IES INDOOR REPORT
PHOTOMETRIC FILENAME : LLI090911B.IES**

DESCRIPTION INFORMATION (From Photometric File)

IESNA:LM-63-2002
 [TEST] LLI 0909-11B
 [TESTLAB] LIGHT LABORATORY INC
 [ISSUEDATE] 9/16/2008
 [MANUFAC] ATEX AMERICA, INC.
 [LUMCAT] LM03-011AW5-1
 [LUMINAIRE] 3-7/16"L. X 1-1/32"W. X 11/32"H. LED MODULE
 [MORE] 3 COOL WHITE LEDS, POLYCARBONATE CASE
 [LAMPPOSITION] 0,0
 [LAMPCHAT] COOL WHITE LED
 [OTHER] INDICATING THE CANDELA VALUES ARE ABSOLUTE AND
 [MORE] SHOULD NOT BE FACTORED FOR DIFFERENT LAMP RATINGS.
 [_INPUT] 12VDC, 0.823W
 [_TEST PROCEDURE] IESNA:LM-79-08

CHARACTERISTICS

Lumens Per Lamp	N.A. (absolute)
Total Lumens	N.A. (absolute)
Luminaire Lumens	48
Total Luminaire Efficiency	N.A.
Luminaire Efficacy Rating (LER)	59
Total Luminaire Watts	0.823
Ballast Factor	1.00
CIE Type	Direct
Spacing Criteria (0-180)	1.28
Spacing Criteria (90-270)	1.28
Spacing Criteria (Diagonal)	1.36
Basic Luminous Shape	Rectangular w/Sides
Luminous Length (0-180)	0.29 ft
Luminous Width (90-270)	0.07 ft
Luminous Height	0.01 ft



LUMINANCE DATA (cd/sq.m)

Angle In Degrees	Average 0-Deg	Average 45-Deg	Average 90-Deg
45	8111	7522	7276
55	7306	6658	6443
65	5719	4939	4894
75	3264	2789	2537
85	1744	1998	1616

CANDELA TABULATION

	<u>0.0</u>	<u>22.5</u>	<u>45.0</u>	<u>67.5</u>	<u>90.0</u>
0.0	17.4	17.4	17.4	17.4	17.4
1.0	17.5	17.5	17.7	17.7	17.5
3.0	17.6	17.7	17.7	17.6	17.8
5.0	17.4	17.4	17.5	17.2	17.7
7.0	17.1	17.3	17.2	17.1	17.1
9.0	17.0	17.2	17.2	17.1	17.1
11.0	17.0	16.9	16.9	17.0	17.0
13.0	16.8	16.7	16.7	16.9	16.8
15.0	16.6	16.5	16.7	16.9	16.6
17.0	16.3	16.4	16.4	16.5	16.4
19.5	16.0	16.1	16.2	16.4	16.2
22.5	15.8	15.9	15.9	16.0	16.1
25.5	15.8	15.6	15.5	15.5	15.6
29.0	15.2	15.1	15.0	14.9	15.0
33.0	14.3	14.2	14.2	14.0	14.4
37.5	13.1	13.2	13.3	13.3	13.2
42.5	11.8	11.9	11.9	12.0	11.7
47.5	10.6	10.7	10.7	10.7	10.5
55.0	8.3	8.4	8.5	8.2	8.4
65.0	4.9	5.0	5.0	5.0	5.1
75.0	1.8	1.9	2.0	2.0	1.9
85.0	0.4	0.6	0.8	0.8	0.7
90.0	0.3	0.4	0.4	0.5	0.5
95.0	0.2	0.3	0.4	0.4	0.4
105.0	0.3	0.3	0.3	0.3	0.3
115.0	0.3	0.3	0.3	0.3	0.3
125.0	0.3	0.3	0.3	0.3	0.3
135.0	0.3	0.4	0.4	0.5	0.7
145.0	0.2	0.3	0.3	0.4	0.5
155.0	0.0	0.0	0.0	0.0	0.0
165.0	0.0	0.0	0.0	0.0	0.0
175.0	0.0	0.0	0.0	0.0	0.0
180.0	0.0	0.0	0.0	0.0	0.0

IES INDOOR REPORT
PHOTOMETRIC FILENAME : LLI090911B.IES

ZONAL LUMEN SUMMARY

Zone	Lumens	%Lamp	%Fixt
0-30	12.74	N.A.	26.4
0-40	19.94	N.A.	41.3
0-60	34.83	N.A.	72.1
0-90	46.46	N.A.	96.2
90-120	.87	N.A.	1.8
90-130	1.16	N.A.	2.4
90-150	1.75	N.A.	3.6
90-180	1.84	N.A.	3.8
0-180	48.3	N.A.	100

Total Luminaire Efficiency = N.A.%

ZONAL LUMEN SUMMARY

Zone	Lumens
0-10	1.34
10-20	4.71
20-30	6.69
30-40	7.2
40-50	8.8
50-60	6.1
60-70	6.34
70-80	3.57
80-90	1.72
90-100	.21
100-110	.35
110-120	.31
120-130	.28
130-140	.31
140-150	.28
150-160	.09
160-170	0
170-180	0

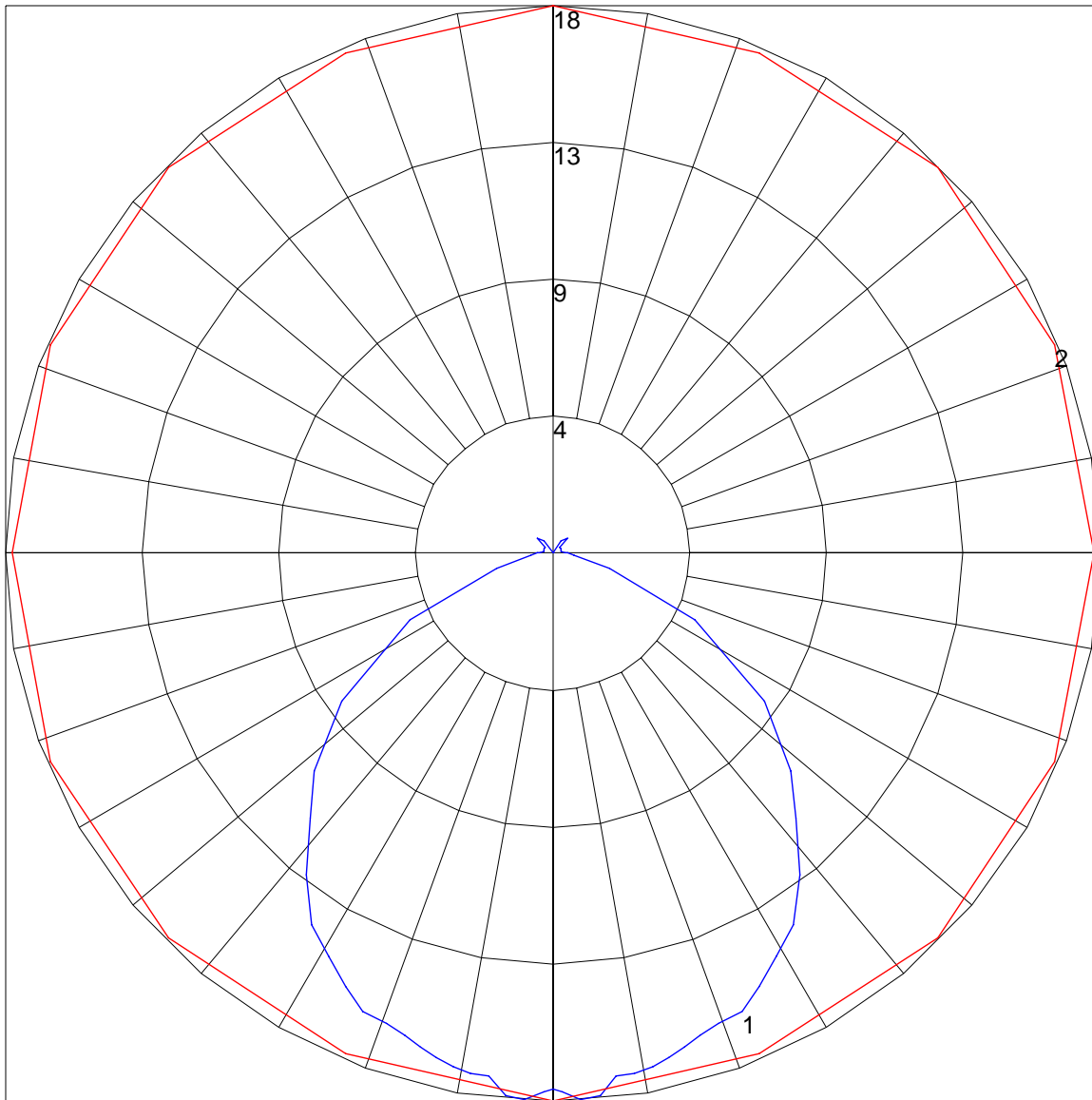
IES INDOOR REPORT
PHOTOMETRIC FILENAME : LLI090911B.IES

COEFFICIENTS OF UTILIZATION - ZONAL CAVITY METHOD

Effective Floor Cavity Reflectance 0.20

RC	80				70				50			30			10			0			
	RW	70	50	30	10	70	50	30	10	50	30	10	50	30	10	50	30	10	0		
0	119	119	119	119	119	116	116	116	116	116	110	110	110	104	104	104	99	99	99	97	
1	108	103	98	94	105	100	96	92	95	91	88	90	87	85	86	84	82	86	84	82	79
2	98	89	82	76	95	87	80	75	83	77	72	79	74	70	75	71	68	75	71	68	66
3	89	78	70	63	86	76	68	62	73	66	60	69	64	59	66	61	57	66	61	57	55
4	81	69	60	53	79	67	59	53	64	57	51	62	55	50	59	54	49	59	54	49	47
5	75	62	53	46	72	60	52	45	58	50	44	55	49	44	53	47	43	53	47	43	41
6	69	56	46	40	67	54	46	40	52	45	39	50	43	38	48	42	38	48	42	38	35
7	64	50	42	35	62	49	41	35	47	40	34	46	39	34	44	38	33	44	38	33	31
8	60	46	37	31	58	45	37	31	43	36	31	42	35	30	40	34	30	40	34	30	28
9	56	42	34	28	54	41	34	28	40	33	28	39	32	27	37	31	27	37	31	27	25
10	52	39	31	26	51	38	31	26	37	30	25	36	29	25	35	29	25	35	29	25	23

POLAR GRAPH



Maximum Candela = 17.8 Located At Horizontal Angle = 90, Vertical Angle = 3
1 - Vertical Plane Through Horizontal Angles (90 - 270) (Through Max. Cd.)
2 - Horizontal Cone Through Vertical Angle (3) (Through Max. Cd.)

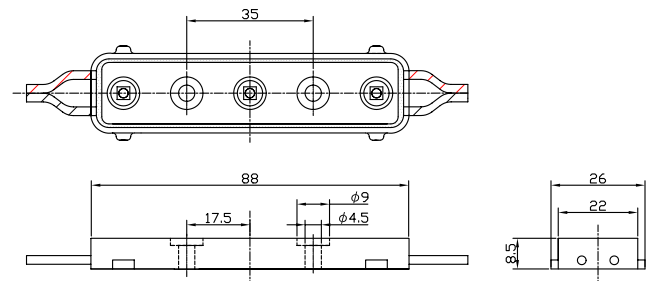
**IES INDOOR REPORT
PHOTOMETRIC FILENAME : LLI060815A.IES**

DESCRIPTION INFORMATION (From Photometric File)

IESNA:LM-63-2002
[TEST] LLI 0608-15A
[TESTLAB] LIGHT LABORATORY INC
[ISSUEDATE] 7/13/2008
[MANUFAC] INTERNATIONAL CONCEPT INC.
[LUMCAT] LM03-164AL5-0
[LUMINAIRE] 3-7/16"L. X 1-1/32"W. X 11/32"H. LED MODULE
[MORE] 3 WARM WHITE LEDS, POLYCARBONATE CASE
[LAMPPOSITION] 0,0
[LAMPCAT] WARM WHITE LED
[OTHER] INDICATING THE CANDELA VALUES ARE ABSOLUTE AND
[MORE] SHOULD NOT BE FACTORED FOR DIFFERENT LAMP RATINGS.
[_INPUT] 12VDC, 1.30W

CHARACTERISTICS

Total Rated Lamp Lumens	N.A. (absolute photometry)
Total Luminaire Efficiency	N.A.
Luminaire Efficacy Rating (LER)	N.A.
Total Luminaire Watts	1
Ballast Factor	1.00
CIE Type	Direct
Spacing Criteria (0-180)	1.24
Spacing Criteria (90-270)	1.26
Spacing Criteria (Diagonal)	1.36
Basic Luminous Shape	Rectangular w/Sides
Luminous Length (0-180)	0.29 ft
Luminous Width (90-270)	0.07 ft
Luminous Height	0.01 ft



LUMINANCE DATA (cd/sq.m)

Angle In Degrees	Average 0-Deg	Average 45-Deg	Average 90-Deg
45	4780	4394	4261
55	4401	3917	3835
65	3735	3062	2975
75	2539	1952	1869
85	872	749	923

IES INDOOR REPORT
PHOTOMETRIC FILENAME : LLI060815A.IES

CANDELA TABULATION

	<u>0.0</u>	<u>22.5</u>	<u>45.0</u>	<u>67.5</u>	<u>90.0</u>
0	10.2	10.2	10.2	10.2	10.2
5	10.1	10.1	10.2	10.1	10.1
15	9.7	9.7	9.7	9.8	9.7
25	8.9	9.0	9.0	9.0	8.9
35	8.0	8.0	8.1	8.0	8.1
45	6.6	6.6	6.6	6.6	6.5
55	5.0	5.0	5.0	5.0	5.0
65	3.2	3.2	3.1	3.1	3.1
75	1.4	1.4	1.4	1.4	1.4
85	0.2	0.2	0.3	0.4	0.4
90	0.1	0.1	0.2	0.2	0.2
95	0.1	0.1	0.1	0.1	0.1
105	0.1	0.1	0.1	0.1	0.1
115	0.1	0.1	0.1	0.1	0.1
125	0.0	0.1	0.1	0.1	0.1
135	0.0	0.1	0.2	0.2	0.2
145	0.0	0.1	0.1	0.1	0.1
155	0.0	0.1	0.1	0.1	0.1
165	0.0	0.0	0.0	0.0	0.0
175	0.0	0.0	0.0	0.0	0.0
180	0.0	0.0	0.0	0.0	0.0

IES INDOOR REPORT
PHOTOMETRIC FILENAME : LLI060815A.IES

ZONAL LUMEN SUMMARY

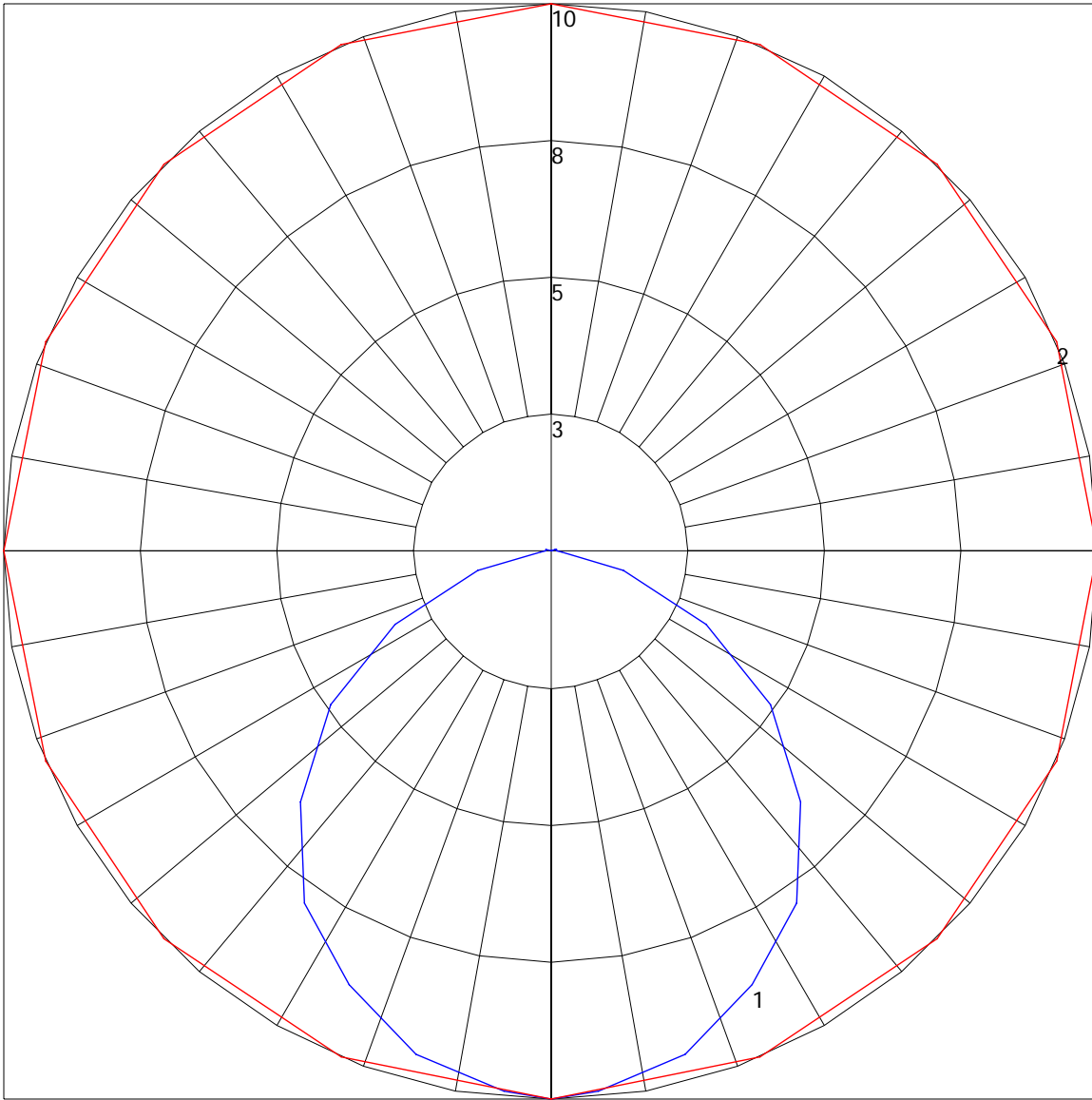
Zone	Lumens	%Lamp	%Fixt
0-30	5.63	N.A.	20
0-40	10.29	N.A.	36.5
0-60	20.3	N.A.	72.1
0-90	27.54	N.A.	97.8
90-120	.28	N.A.	1
90-130	.37	N.A.	1.3
90-150	.55	N.A.	2
90-180	.62	N.A.	2.2
0-180	28.16	N.A.	100

Total Luminaire Efficiency = N.A.%

ZONAL LUMEN SUMMARY

Zone	Lumens
0-10	.24
10-20	1.89
20-30	3.5
30-40	4.66
40-50	5.15
50-60	4.86
60-70	3.86
70-80	2.33
80-90	1.04
90-100	.07
100-110	.11
110-120	.1
120-130	.09
130-140	.1
140-150	.08
150-160	.05
160-170	.02
170-180	0

POLAR GRAPH



Maximum Candela = 10.2 Located At Horizontal Angle = 0, Vertical Angle = 0
1 - Vertical Plane Through Horizontal Angles (0 - 180) (Through Max. Cd.)
2 - Horizontal Cone Through Vertical Angle (0) (Through Max. Cd.)